



SABBATH SCHOOL SUCCESS!

TEACHERS STARTER KIT

December 6, 2006

Contact Information:

Deacon Timothy Hamner Sr.
Sabbath School Superintendent

HG Proprietary and Confidential

TABLE OF CONTENTS

INTRODUCTION	4
MISSION STATEMENT	4
SABBATH SCHOOL THEME	4
TEACHER'S MATERIAL CHECKLIST	4
SABBATH SCHOOL CURRICULUM.....	5
CLASS STRUCTURE.....	7
REWARD SYSTEM	8
CHANGE FOR COLLEGE.....	9
TEACHERS.....	9
SABBATH SCHOOL POLICIES.....	9
REFENCE CENTER.....	10
CLASS CURRICULUM.....	10
ATTENDANCE FORM.....	11
QUARTERLY REPORT FORM.....	12
POLICIES & PROCEDURES	13
ORGANIZATIONAL CHART	14
EVENTS CALENDAR.....	15

INTRODUCTION

The Lord has blessed you with a ministry to educate the membership of the church. The charge of the Sabbath School Teacher is something that should be viewed as a “pastoral” role in the church. For clarity, you are NOT the Pastor but your charge is that of a Pastor; to oversee the educational development of each of your students.

The primary goal of the Sabbath School Teacher is to identify areas of educational weakness and provide for the development of that student in every way possible. Each student is unique and requires assistance based on his characteristic needs.

MISSION STATEMENT

The mission of the Sabbath School is to provide a safe, nurturing environment for spiritual development and practical application of the Principles of Christ.

SABBATH SCHOOL THEME

Hebrews 2:1 - Therefore we ought to give the more earnest heed to the things which we have heard, lest at any time we should let them slip.

TEACHER'S MATERIAL CHECKLIST

- Yahweh's House of God Teacher's Starter kit
- Adult Sabbath School book
- Children's Sabbath School book
- Supply sheet
- My Idea's sheet
- ½ Dozen Pencils or Pens
- 1 pk of Paper
- 1 pk of Dry Erase Markers
- 1 Stapler
- 3 Highlighters
- 1 Staple remover
- 1 Box crayons (primary classes only)

SABBATH SCHOOL CURRICULUM

Sabbath School Year

The Sabbath School year begins in September and concludes in August. The Sabbath School will use a quarter systems for teacher reporting purposes.

1st quarter begins September

2nd quarter begins December

3rd quarter begins March

4th quarter begins June

Core Focus

The Sabbath School department is an important segment of the teaching ministry in the House of God. Our goal is to prepare each of our students to enter into institutions of higher learning or continuing education courses. Each of our classes is design to prepare each student for the next step in the learning process. The core focus of this learning is:

1. The Hebrew Scriptures - Old Testament Survey
2. New Testament Survey
3. Intro Hebrew I
4. Intro Hebrew II
5. Principles of Jesus (24 Principles) I
6. Principles of Jesus II
7. History of the church (Adam to present) I
8. History of the church II
9. History of the church III
10. Written & Oral communication (Speech & English 101)

Student Objects

1. 66 Books of the Bible
 - Students should be able to recite all 66 books of the bible
 - Students should be able to recognize, by sight, and name each book
 - Students should be able to identify the divisions of the bible (including OT & NT; divisions; numeric arrangements)
 - Students should be able to give a brief summary of each book
2. The Disciples Prayer
 - show the ability to recite the Disciples Prayer along with the corresponding scripture verse
 - give a brief summary of the prayer
3. 12 Disciples
 - show the ability to recite the twelve disciples along with the corresponding scripture verse
 - give a brief description of each disciple's work
4. 12 Tribes of Israel (or 12 Sons of Israel)
 - show the ability to recite the twelve tribes along with the corresponding scripture verse
5. Give a brief summary of each tribes significant in history
6. Fruits of the Spirit (Nine)
 - show the ability to recite the nine fruits of spirit along with the corresponding scripture verse
7. 12 Hebrew Months (including transitional months)
8. The Ten Commandments
 - show the ability to recite the ten commandments along with the corresponding scripture verse (adult class according to responsive reading & children's classes according to our summary)
9. Psalms 23
10. Feast Days Observance Leviticus 23
11. Recite the Twenty-four principles along with one corresponding precept.
12. Recite the Beatitudes Matt. 5:1-11
13. EZ Hebrew lessons
14. History of the church

CLASS STRUCTURE

Each teacher will be responsible for the basic structure of there class; however, the teacher should refer to this manual's sample class structure before implementing there own. Lesson plans should be designed to augment the current curriculum. The House of God Children Sabbath Schoolbook should be used as a first form of reference. All other materials needs to undergo a "pastoral review" before using in our classes.

Teachers will be responsible for preparing some type of presentation for our Annual Open House, which is the first Sabbath in December. (also begins our 2nd quarter) Open House is designed to show the parents of our children exactly what is going on in our Sabbath School program. This will also give the church additional exposure to non-members.

Class 1 – pre-school thru kindergarten

Class 2 – 1st thru 2nd grade

Class 3 – 3rd thru 5th grade

Class 4 – 6th thru 8th grade

Class 5 – 9th thru 12th grade

Class 6 – College thru maturity

Class 7 – This space is used for one of the following: New Membership; Computer aided training; etc.

REWARD SYSTEM

SABBATH SCHOOL BUCKS POLICY STATEMENT

The Sabbath School Bucks program is design to reward or discipline student based on participation, attendance, and other scholastic achievements during Sabbath School session. The Sabbath School Superintendent retains the sole right to administer Sabbath school bucks in any way he see fit in accordance to the Sabbath School Student handbook. No other interdepartmental group should use Sabbath School Bucks to reward or discipline students at any time. (note: This policy applies to the current Sabbath School Superintendent, Assistance, or anyone standing in my absence.)

SABBATH SCHOOL BUCKS ADMINISTRATION

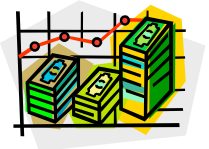


Serious Sabbath School Student(s) will receive a STAR for exceptional work completed during the study period. Each student that receives a STAR will also receive an additional \$10,000 Sabbath Bucks.

Sabbath School bucks will be given in two denominations; \$1,000 & \$5,000. The \$10,000 buck will be given by the superintendent ONLY at his/her discretion. Student can receive bucks for the following:

Rewards

Being on time, in your seat at 10:30 a.m., for the Sabbath School Song	\$ 10,000
Being on time for class when the teacher begins study	\$ 5,000
Bringing study materials to class	\$ 5,000
Class participation (i.e. ask a question, provide positive statements)	\$ 5,000
Being student of the day	\$ 5,000
Bring a visitor to Sabbath School (i.e. non-affiliated person)	\$100,000
Maintain a cumulative average of "C" for current quarter	\$ 50,000
Maintain a cumulative average of "B" for current quarter	\$100,000



(Note: teacher's can add to this list to help students obtain more bucks and to give out these two denominations as liberally as possible)

Penalties

Talking out of turn in class	\$ 50,000
Being disruptive (first incident)	\$250,000
Being disruptive (second incident)	\$500,000

Individual goal for each week: \$20,000 ea week
Individual goal for each month: \$80,000 - \$100,000 ea month
Individual goal for this year 2003-2004: **TWO MILLION DOLLARS**

CHANGE FOR COLLEGE

The Sabbath School will sponsor a scholarship to all students who excel within the Sabbath School program. Each student that is interested has to complete an application form. See Superintendent for more details.

TEACHERS

Teachers that are on time and/or present during the Sabbath School study period are listed as “active” teachers for the teaching year. All teachers that are not available during the teaching period and miss three consecutive weeks will go on the “inactive” teaching list. Teachers who wish to re-activate will go through the teacher re-activation program. (See superintendent for more details)

<u>Teacher Name</u>	<u>Class No.</u>	<u>Status</u>
Sister Angelique Hamner	1	Full-time
Bro. Bryant Martin	2	Full-time
Elect Lady S. Hamner	3	Full-time
Min. Michael Hamner Sr.	4	Full-time
Eld. Cary Foster	5	Part-time/Float
Dea. Jerry Tyner	6	Part-time/Float
Dea. Timothy Hamner Sr.	6	Part-time/Float
Bishop L. C. Hamner, Pastor	6	Part-time/New Member
Mother Mattie Wyche	7	Special Session
Mother Sakeenah Karim	7	Special Session
Sister Vera Jacobs	7	Special Session

SABBATH SCHOOL POLICIES

- Each student is request to be in the sanctuary before the start of the Sabbath School song. Students will be tardy after the song begins.
- Each student is requested to make “best efforts” to be on time for Sabbath School which starts at 10:30 a.m.
- The Assistant Sabbath School Superintendent will be in charge in the absence of the Sabbath School Superintendent.
- In the absence of both Superintendents, the Board of Directors chairman will be in charge and/or next ranking officer will be in charge.
- Participants in the Sabbath School should come prepared with all necessary learning devices. (i.e. Sabbath School Book, Bible, Paper, Pen, Dictionary etc.)

REFERENCE CENTER

- *66 Books of the Bible* – Information can be found in any bible preface, table of contents, or index.
- *Bible Divisions* – Thompson Chain Reference Bible or on the internet.
- *The Disciples Prayer* – Found in Matthew 6:9-13; Luke 11:2-4
- *12 Disciples* – Found in Matthew 10:2-4; Mark 3:16-19; Luke 6:14-16
- *12 Tribes of Israel (or 12 Sons of Israel)* – Found in Exodus 1:1-4
- *9 Fruit of the Spirit* – Found in Galatians 5:22-23
- *12 Hebrew Months (including transitional months) and where they are found in scripture* – Found in the Bible, Sabbath School Book, Meridian Webster Dictionary, Encyclopedia Britannica, etc.
- *The Ten Commandments* – Found in Exodus 20:1-18
- *Psalms 23* – Found in any bible Psalms 23 memorize entire chapter
- *Feast Days Observance* – Found in the entire chapter of Leviticus 23
- *Beatitudes* – Matt. 5:1-11

CLASS CURRICULUM

Class curriculum is provided by each Sabbath School teacher.

ATTENDANCE FORM

STUDENT ATTENDANCE FORM
- (Sample) -

Today's Date: _____

Class No. _____

No. Students: _____

No. Students Tardy: _____



Student of the Day: _____

(One student per class, please print)

QUARTERLY REPORT FORM

Sabbath School Report

- **Class Reports**

- Each teacher is requested to complete this form by _____ date.

- **Class #1**

- Text goes here

- **Class #2**

- Text goes here

- **Class #3**

- Text goes here

- **Class #4**

- Text goes here

- **Projects**

- **<<General>>**

- Text goes here

- **Activities Planned for <<Date>>**

- **<<General>>**

- Text goes here

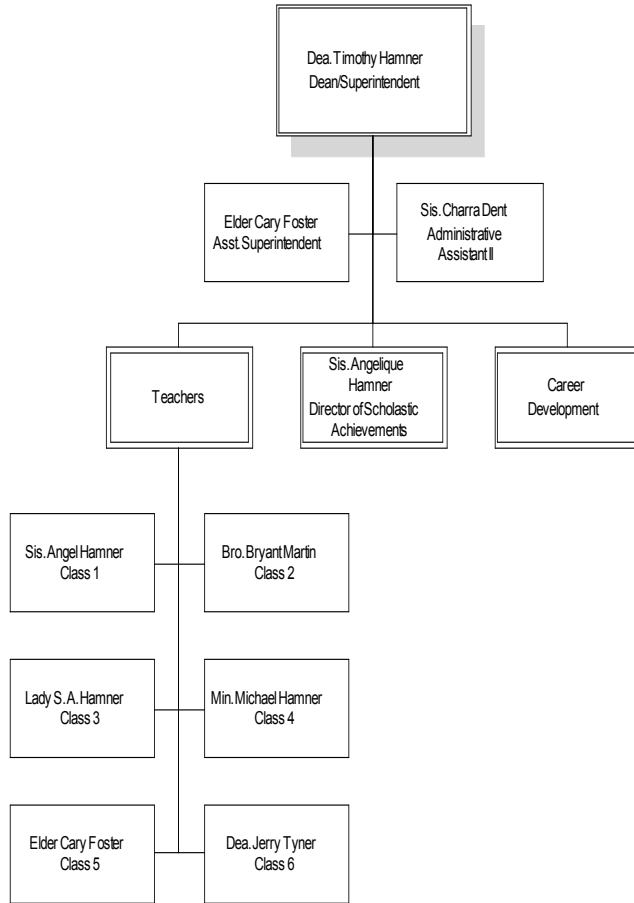
POLICIES & PROCEDURES

- Please notify the superintendent 24 hours in advance of an absence.
- Each teacher is requested to attend the monthly meeting unless otherwise noted in the weekly announcements. If the teacher misses three consecutive meetings or a total of 4.5 meetings, that teacher will receive a two-week suspension.
- Each teacher is required to submit a “class” curriculum execution schedule to show how each item in the curriculum is administered to each student. This schedule is due on the beginning of the 2nd quarter.
- Teachers can request a parent conference at any time during the year to discuss potential problem areas. All problem students are sent to the alternative class for corrective instruction.
- Each teacher is requested NOT to physically discipline a child. Please read the House of God Sexual misconduct policy for further details.

ORGANIZATIONAL CHART

Sabbath School Organization Chart

Sunday, October 27, 2002



EVENTS CALENDAR

September 2003						
Sunday	Monday	Tuesday	Wednesday	Thursday	Friday	Saturday
	1	2	3	4	5	6
7	8	9	10	11	12	13
14	15	16	17	18	19	20
21	22	23	24	25	26	27 Feast of Trumpets <i>Orientation Day</i> ★
28	29	30				

October 2003

Sunday	Monday	Tuesday	Wednesday	Thursday	Friday	Saturday
			1	2	3	4
5	6 Day of Atonement	7	8 Teacher's Meeting	9	10	11 Feast of Tabernacles <i>Special Session ☆</i>
12	13	14	15	16	17	18 Feast of Tabernacles <i>Special Session ☆</i>
19	20	21	22	23	24	25 <i>Special Session ☆</i>
26	27	28	29	30	31	

November 2003

Sunday	Monday	Tuesday	Wednesday	Thursday	Friday	Saturday
						1
2	3	4	5	6	7	8
9	10	11	12 Teacher's Meeting	13	14	15
16	17	18	19	20	21	22 <i>Special Session</i> ☆
23	24	25	26	27	28	29 <i>Special Session</i> ☆
30						

December 2003

Sunday	Monday	Tuesday	Wednesday	Thursday	Friday	Saturday
	1	2	3	4	5	6 <i>Sabbath School Challenge ☆</i>
7	8	9	10 Teacher's Meeting	11	12	13
14	15	16	17	18	19	20
21	22	23	24	25	26	27
28	29	30	31			

January 2004

Sunday	Monday	Tuesday	Wednesday	Thursday	Friday	Saturday
				1	2	3
4	5	6	7	8	9	10
11	12	13	14 Teacher's Meeting	15	16	17
18	19	20	21	22	23	24
25	26	27	28	29	30	31

February 2004

Sunday	Monday	Tuesday	Wednesday	Thursday	Friday	Saturday
1	2	3	4	5	6	7
8	9	10	11 Teacher's Meeting	12	13	14
15	16	17	18	19	20	21
22	23	24	25	26	27	28
29						

March 2004

Sunday	Monday	Tuesday	Wednesday	Thursday	Friday	Saturday
	1	2	3	4	5	6 <i>Sabbath School Challenge ☆</i>
7	8	9	10 Teacher's Meeting	11	12	13
14	15	16	17	18	19	20
21	22	23	24	25	26	27 <i>Special Session ☆</i>
28	29	30	31			

April 2004

Sunday	Monday	Tuesday	Wednesday	Thursday	Friday	Saturday
				1	2	3 <i>Special Session ☆</i>
4	5 Passover	6 Feast of Unleavened Bread	7	8	9	10
11 Passover	12	13	14 Teacher's Meeting	15	16	17
18	19	20	21	22	23	24
25	26	27	28	29	30	

May 2004

Sunday	Monday	Tuesday	Wednesday	Thursday	Friday	Saturday
						1
2	3	4	5	6	7	8
9	10	11	12 Teacher's Meeting	13	14	15 <i>Special Session</i> ☆
16	17	18	19	20	21	22
23	24	25	26 Pentecost	27	28	29
30	31					

June 2004

Sunday	Monday	Tuesday	Wednesday	Thursday	Friday	Saturday
		1	2	3	4	5 <i>Sabbath School Challenge ☆</i>
6	7	8	9	10	11	12
13	14	15	16	17	18	19
20	21	22	23	24	25	26
27	28	29	30			

July 2004

Sunday	Monday	Tuesday	Wednesday	Thursday	Friday	Saturday
				1	2	3
4	5	6	7	8	9	10
11	12	13	14 Teacher's Meeting	15	16	17 <i>Special Session</i> ☆
18	19	20	21	22	23	24
25	26	27	28	29	30	31

August 2004

Sunday	Monday	Tuesday	Wednesday	Thursday	Friday	Saturday
1	2	3	4	5	6	7
8	9	10	11 Teacher's Meeting	12	13	14
15	16	17	18	19	20	21
22	23	24	25	26	27	28
29	30	31				