



# SABBATH SCHOOL SUCCESS!

A PRACTICAL GUIDE TO SETUP OF YOUR SABBATH SCHOOL

**Proposal for**

**December 6, 2006**

Contact Information:

Deacon Timothy Hamner Sr.  
District Sabbath School Superintendent

**HG Proprietary and Confidential**



**Table of Contents**

INTRODUCTION ..... 4

INFRASTRUCTURE ..... 4

OVERALL CURRICULUM ..... 5

ADMINISTRATION ..... 6

APPENDIX & FIGURES ..... 7

## INTRODUCTION

The Lord has blessed you with a ministry to educate the membership of the church. The charge of the Sabbath School Teacher is something that should be viewed as a “pastoral” role in the church. For clarity, you are NOT the Pastor but your charge is that of a Pastor; to oversee the educational development of each of your students.

The primary goal of the Sabbath School Superintendent is to identify areas of educational weaknesses and provide for the development of that student in every way possible. Each student is unique and requires assistance based on his characteristic needs.

## INFRASTRUCTURE

The scriptures state, “Where there is no vision, the people perish.”. This statement speaks to the overall health of your Sabbath School work. If you don’t care about it, then no one else will care! Below is a list of things that provided assistance in starting our Sabbath School program in the right direction; that is, Sabbath School Success!

“You can NOT do it all by yourself”; however, our father YAHWEH has provided for us in cases where we have to do it alone. The scripture says, “a threefold cord is not quickly broken” so your goal is to pray and solicit volunteers to fill vital offices within your Sabbath School. In smaller groups, it is best to solicit volunteers to be your Assistant Superintendent, Secretary and Teacher. You will find that these offices are vital to your success as a Superintendent. Now you have a three fold cord! (see small church org chart in figures section)

In larger groups, you will want to setup the “ideal” Sabbath School staff complete with Dean, Assistant Dean, Director of Scholastic Achievements, Guidance Counselors, and sub-committees for special activities that occur throughout the year. Each of these offices will be defined later in this manual. Each officer of the Sabbath School should have a clear and concise job description that explains your expectations. Once again, our goal is to develop our students including, if necessary, staff members. (see large church org chart in figures section)

## OVERALL CURRICULUM

One item that will help any superintendent is to document everything that they do; from opening the Sabbath School with a song to the concluding prayer. I call this your Sabbath School script. Your “general” curriculum will begin from the information that you gather from these two key periods; opening the Sabbath School and conclusions with class reviews. If you find that your students struggle with any portions of the opening, then you add that item to your “base” or “introduction” curriculum. (e.g. Learn Sabbath Morning Song and responsive reading.)

Jesus questioned Simon Peter with the following exchange, “Simon, son of Jonas, loveth thou me?” His reply as many of us so quickly do without thought, “Yes”. The Lord replied, Feed my sheep. I believe that the Lord is still asking this question of the Sabbath School Superintendents today; if you love me, then feed my sheep. Teach my people about my ways; my actions; and how to honor and respect others. This task is a monumental one but we have the Lord on our side and we have the counsel of our local Pastor.

Consult with your Pastor to find out the goals of the local church. This information can be used as a catalyst to start your curriculum on the right path. ~~Find out about the organization that you associate with, if any, and gather information regarding what members need to know in order to function within the organization nationally.~~ Armed with this information, pray to the Lord for guidance on how this should be implemented and presented to his people.

The initial curriculum will deal with what I like to call “Back to the Basics”. This is a good starting point because this is the very foundation on which all other knowledge will be based. This is your chance to introduce to some and review for other the basic oracles or principles of God. Here’s an example of a “Back to the Basics” curriculum:

- Learn the Sabbath School Song
- Learn to recite the responsive reading
- Learn to recite the disciple’s prayer
- Learn the books of the Bible
- Learn to recite the Fruits of the Spirit

As you begin to gain success in these areas then you’ll add other items of interest to the curriculum until your ultimate goal is reached. Your plan should have an intended goal at the end of the program. You should plan for each phase of study in your student’s Sabbath School career. Students enter kindergarten, and then advance to High School. High School prepares students for collegiate studies or for various employment opportunities. Your local Sabbath School will prepare students to become functional adult members or even teachers in your Sabbath School. The possibilities are endless!

## ADMINISTRATION

Your administrative staff is your most important asset. Most of your help will most likely be volunteers, so being able to identify their strengths will depend on your interaction with them. I'd recommend working with your immediate family for a more cooperative experience. However, this could be a larger challenge than working with someone outside the family. Next, create a job description for the various tasks that you are requesting. Within the job description, you will identify the goals for each of the offices within the Sabbath School and what you define as success within the title of Sabbath School Superintendent.

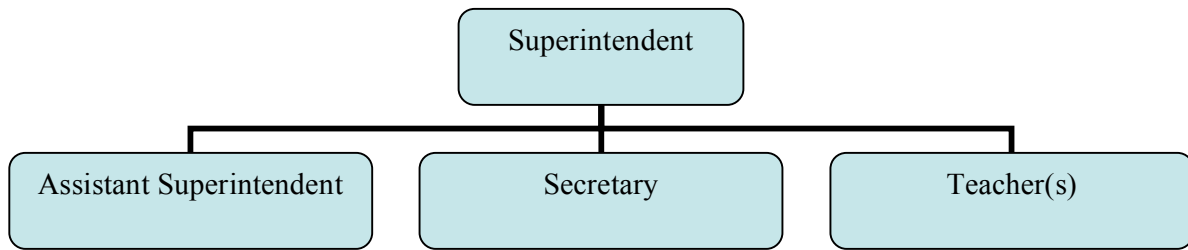
The primary goal for each teacher is to develop a plan or "how to" guide demonstrating how they will achieve the goals that you laid out in your "master" curriculum. For example, the State of California Board of Education requires each student to know how to write a complete sentence by the end of grade 1. The teacher analysis. . . . The teacher would write and/or do the following:

- Day 1 – teach students about alphabet
- Day 2 – review alphabet
- Day 3 – teach student phonics sounds
- Day 4 – review phonics sounds
- Day 5 – show students how to write words

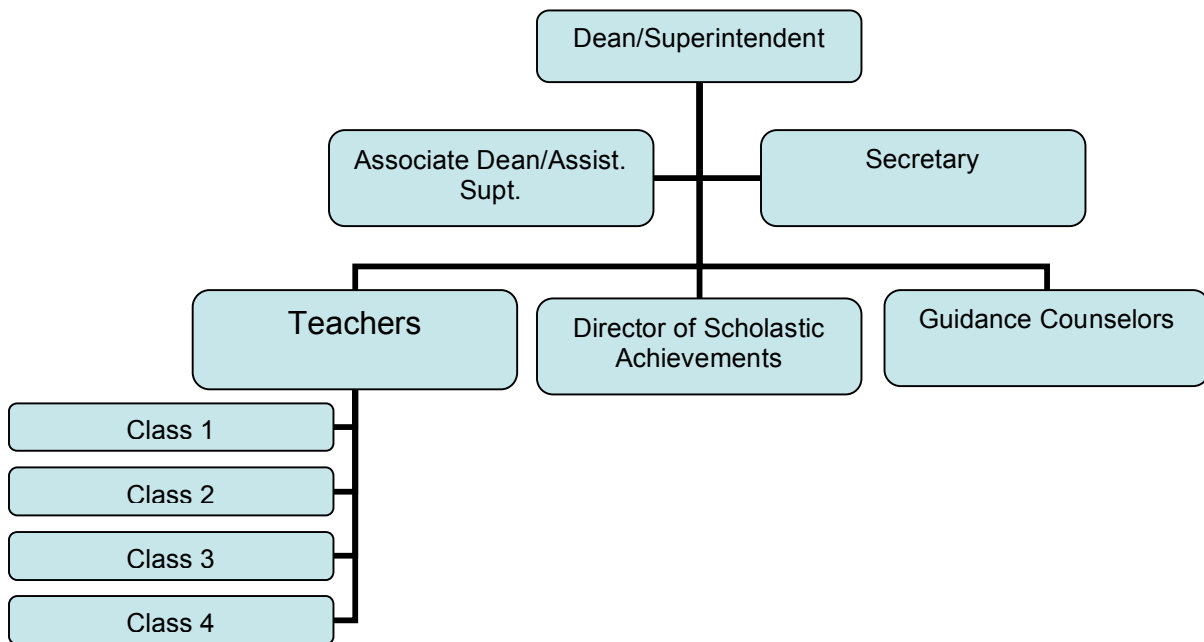
In the example above, the teacher defines "how" they will achieve the goals of the State of California Board of Education. By the end of this period or school year, the teacher has a direct path to the objects of the state. At any time, a substitute teacher could take this information and work within the guideline of the teachers' lesson plan. This continuity will allow for a smoother class experience.

Thus, each Sabbath School Teacher will list both his/her short term goals and show how and when they may be attained and also list her long-term goals and show when and how they may be accomplished.

APPENDIX & FIGURES



SMALL SABBATH SCHOOL SETUP



LARGE SABBATH SCHOOL SETUP